

**GENERAL INFO**

Venue	MUSIS, Muzenzaal
Address (Stage door)	Velperbuitensingel 23 6828 CV Arnhem Netherlands
Phone number	+31 (0)26 3720 710
Phone number (day of the show)	+31 (0)6 5074 0211 (local tech crew) +31 (0)26 3720 710 (production)
Website	<a href="http://www.musisenstadstheater.nl">www.musisenstadstheater.nl</a>

**MUSIS CONTACT**

<b>Promoter Pop, Jazz &amp; World music</b> Ralph Roelvink <a href="mailto:programma@musisenstadstheater.nl">programma@musisenstadstheater.nl</a> +31(0)26 3720 715	<b>Promoter Classical music</b> Kenne Peters <a href="mailto:programma@musisenstadstheater.nl">programma@musisenstadstheater.nl</a> +31(0)26 3720 715
<b>Production</b> Team evenementen <a href="mailto:evenementen@musisenstadstheater.nl">evenementen@musisenstadstheater.nl</a> +31(0)26 3720 710	<b>Marketing</b> Team marketing <a href="mailto:marketing@musisenstadstheater.nl">marketing@musisenstadstheater.nl</a> +31(0)26 3720 721

**STANDAARD TIME SCHEDULE**

13:00	Start local tech crew & backstage manager
14:00	Get in / load in crew
16:30	Get in band
17:00	Soundcheck
18:00	Dinner break
19:00	Final adjustments
19:30	Doors
20:00	<b>SHOWTIME</b>
22:00	End of show
00:00	Curfew (dressing rooms and load out)

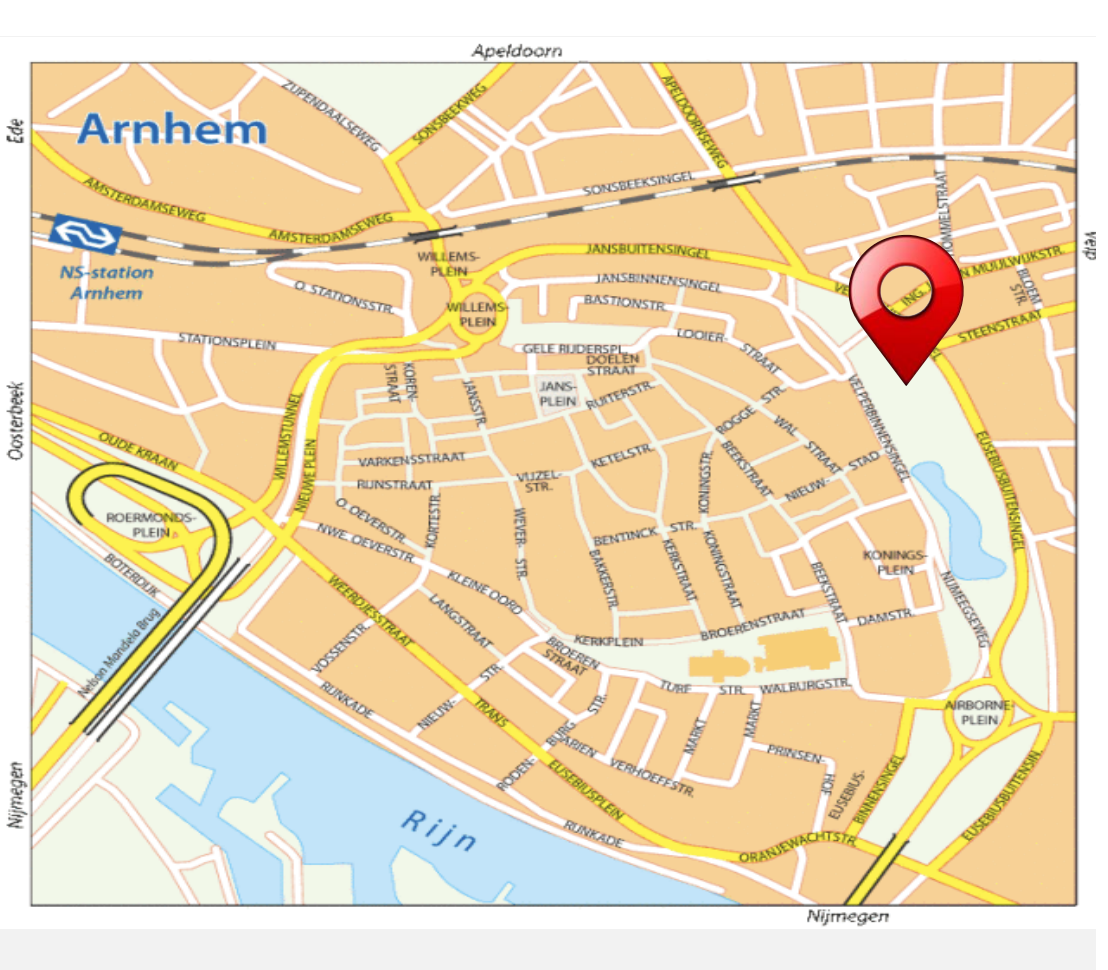
**IMPORTANT INFO**

<b>Show information</b>	Please make sure that MUSIS receives all your relevant show information three months prior to the date of the show, at the latest! We need your information on time for the staff planning, equipment and hospitality. We expect you to send us a decent tech rider, stage and lighting plot, along with a hospitality rider. If we do not receive these requirements / this information in full, we will work according to our standard time schedule and no additional requests will be honoured.
<b>Guest list</b>	The guest list has to be mailed to <a href="mailto:evenementen@musisenstadstheater.nl">evenementen@musisenstadstheater.nl</a> one week prior to the date of your show. Each production has a maximum of 15 guests, including those of the support act.
<b>Time schedule</b>	Please respect our timetable, which we shall send you by a call-sheet and has to be confirmed by you. No changes can be made one week prior to the show. Due to legal aspects concerning working hours, ticket information and employee costs, agreed upon timetables are not to be exceeded.
<b>Backline</b>	MUSIS does not provide a backline except if agreed upon our booking agreement. If so, we will rent one, in accordance with your specifications, where possible.
<b>included</b>	Included: in both halls; House PA & lights, standard promotion, standard tech crew (incl. 1 stagehand) and Stage & Foh barriers NOT included: Ground transportation, runner, backline, IEM systems, technical requirements not mentioned in our technical specs.

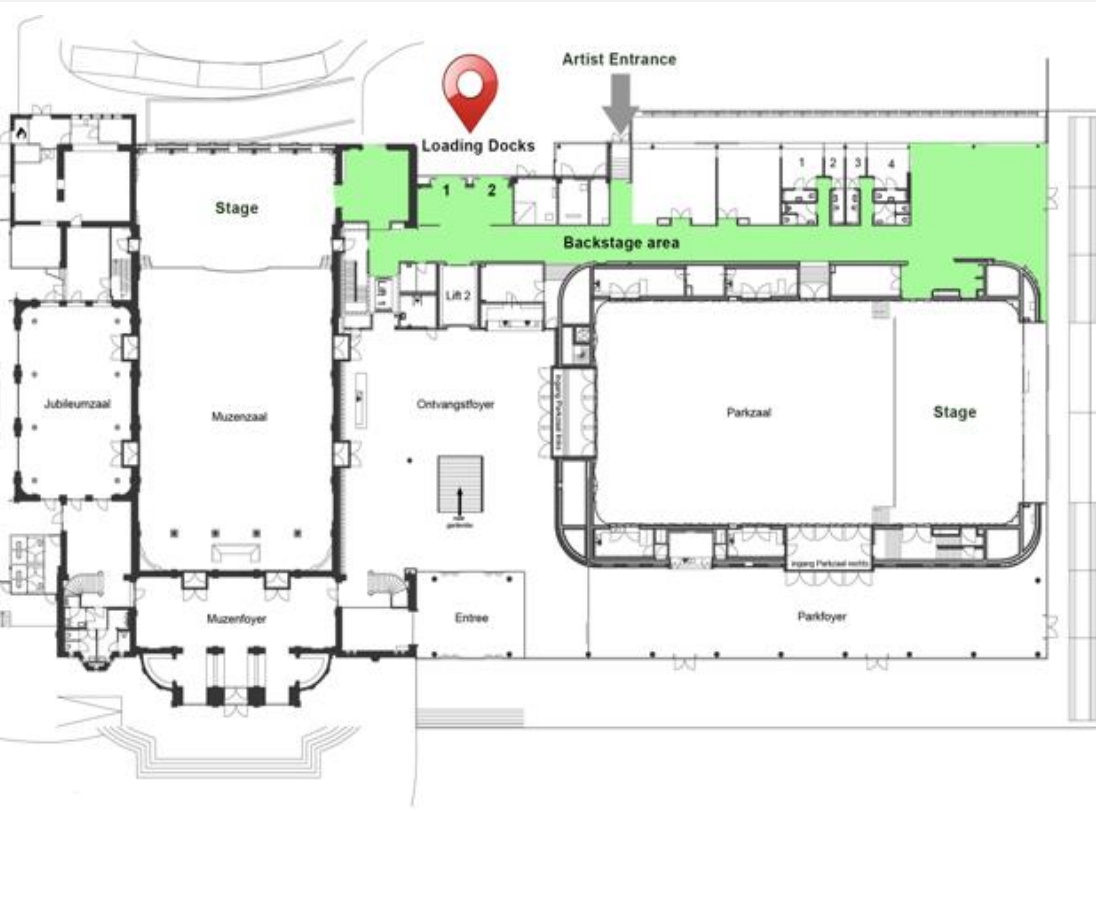
<b>Diner</b>	If agreed upon in our booking agreements, dinner will be arranged by MUSIS and be in-house, in our downstairs green room (± 120m <sup>2</sup> - 40 to 50 people). A decent meal will be served, no fast food or whatsoever. Vegetarian or vegan options will be provided, according to the catering rider of the artist. We need your information 14 days prior to the day of the show, along with information about allergies and other dietary wishes. If there are no agreements to provide dinner, please contact Production for more information. MUSIS has a large professional kitchen with all the equipment wished for. If you would like to use our kitchen, please contact Production & Facility in advance for terms and conditions.
<b>Prohibited</b>	Use of pyrotechnics/open fire/flames/special fx is only allowed with a Dutch license, which has to be approved by our Production & Facility team, one month prior to the show. Use of confetti, streamers or silly strings is not allowed !
<b>Smoking</b>	It is not permitted to smoke inside MUSIS. There are fire alarms in all areas, and in case of alarm, This will result in complete evacuation and cancelling of the show. When the alarm is the result of the artist and/or artist's crew smoking inside MUSIS, the agreed payment or fee will not be made to the artist.
<b>Merchandise</b>	If you bring your own merchandiser, please contact the backstage manager on the day of the Show for best spot and loading instructions. If you want us to take care of your merchandise, please contact Production one month prior to the show.
<b>Local crew</b>	1x sound technician 1x lighting technician 1x stagehand
<b>Security</b>	Standard security / And Barriers
<b>Parking</b>	We have two loading docks with dock levellers for two halls. Please check the call-sheet for information concerning how many you may use on the day of the show. The backstage manager will inform you on the day of arrival what the best solution is for both parties. There is 2x 32A 3-phase CEE-form for nightliners and trucks.
<b>Internet/Wi-Fi</b>	We have a secured and free wireless internet connection throughout the building. Wi-Fi: Muis - Password: available on request
<b>Dressing rooms</b>	MUSIS has seven dressing rooms for two halls. Four small dressing rooms including a shower and toilet are situated on stage level. Three large dressing rooms (two with a shower and toilet) are situated in the basement (spiral staircase). All dressing rooms are lockable and are furnished with tables, chairs, mirrors, adequate lighting and power outlets. If we have an event in both halls at the same time, our staff will make a division in the dressing rooms, as close as possible to the artist's stated in the hospitality rider.
<b>Photographer</b>	Muis has an in-house photographer, who will take promotional pictures without flash, and only during the first three songs of the show, unless otherwise stated.

**Route**

Please note that the only way of approaching the venue's loading docks, is by taking the one-way street called Eusebiusbuitensingel. Make sure that once you enter this street, coming from the 'Airborne Plein', you stay in the left lane!! On your left side you will see the large green venue, and after 200 meters, you can drive your truck or coach onto the venue premises. The two loading docks are situated there. On the left side of the docks you will find the artist entrance (stage door).



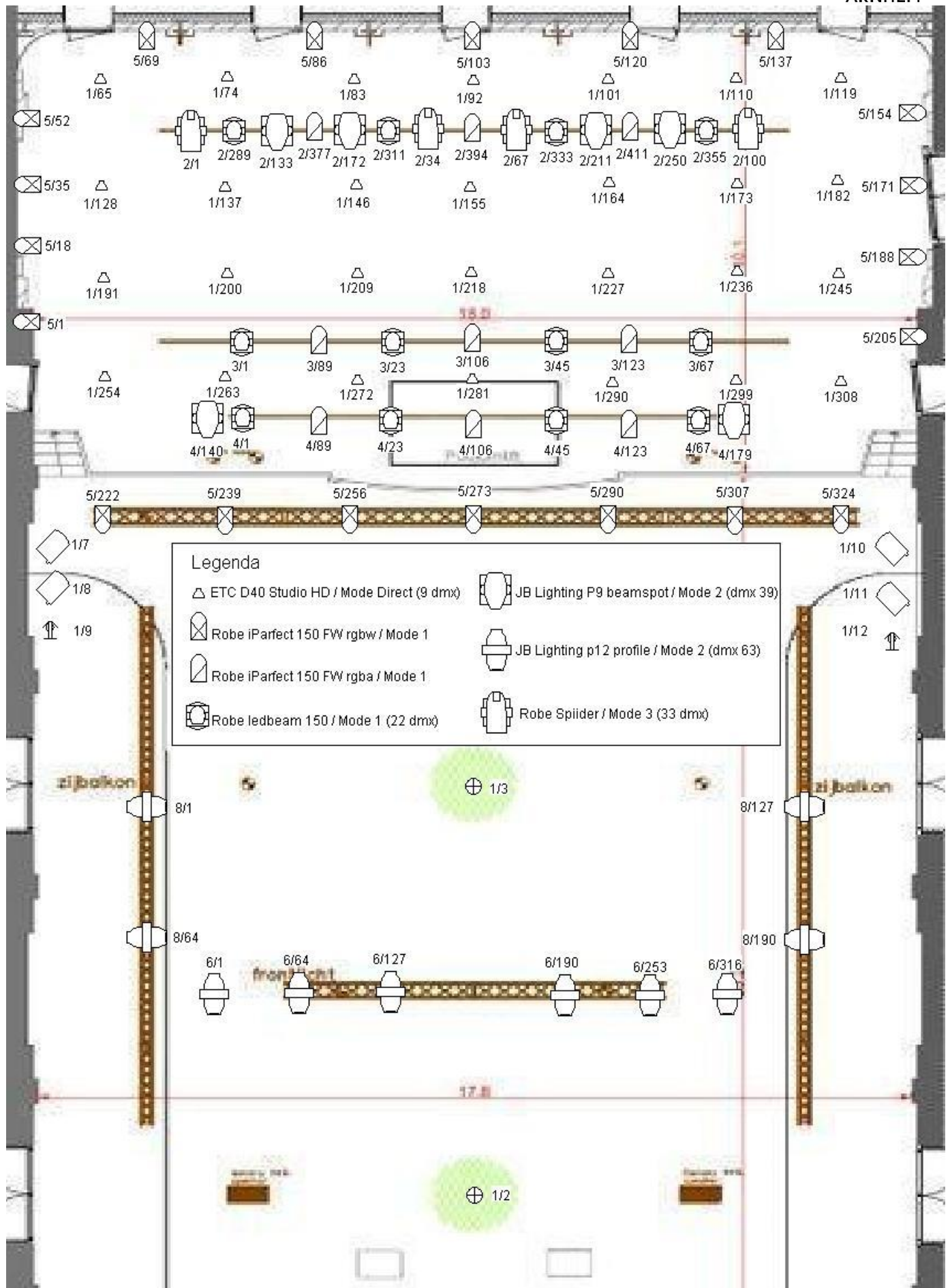
We have two loading docks with dock levellers for two halls. Please check the call-sheet for information concerning how many you may use on the day of the show. The backstage manager will inform you on the day of arrival what the best solution is for both parties. There is 1x 63A 3-phase CEE-form for nightliners and trucks.



MUZENZAAL specs	GENERAL
<b>Capacity</b>	Seated: 480 - balcony: 265 – standing 915 (balcony excluded)
<b>Stage size</b>	17 m width x 10 m depth - height 1 m
<b>Clearance</b>	10 meters
<b>Hall size</b>	18 m width x 26 m depth
<b>Stage doors</b>	height 2,25 m - width 1,60 m
<b>Loading docks</b>	height 2,45 m - width 2,95 m                      Distance between loading dock and stage is 15 meters
<b>Aerial lifts</b>	1x ALP lift PHCI 1050 - vertical mast lift – working height maximum 10,50 m 1x Dingli AWP 14 - vertical mast lift - working height maximum 14 m
<b>Risers</b>	16x risers 1 m x 2 m Height: 20, 40, 60 & 80 cm Wood colour surface. 12x risers 1 m x 2 m Height: 20, 40, 60 & 80 cm Black colour surface.
<b>Marley</b>	15 meters width 9 meters depth
<b>Grand Drape</b>	None available. Or possible.
<b>Legs</b>	We have one leg per stage side available. Max 4 meters width 7 meters high.
<b>Back drop</b>	There is no backdrop available in our Muzenzaal, we do have two fixed curtains running along the back and side walls of our stages, Colors options are Black or White.
<b>FOH Size standing concerts</b>	4 meters width 3 meters depth or                      made with mojo barriers by standing concerts 3 meters width 4 meters depth
<b>Power supply (sound &amp; lighting)</b>	Stage left: 1x 32A 3 phase (CEE form) - 2x 63 3 phase (CEE form) Stage right: 1x 32A 3 phase (CEE form) - 1x 125A 3 phase (CEE form) Backline power 230V, no converters available
<b>Rigging</b>	Flybar 1 – distance from centre stage 1,8 meter Flybar 2 – Distance from centre stage 3,6 meter Flybar 3 – Distance from centre stage 7,9 meter Maximum weight is 500 kg uniformly distributed. Maximum point load at the steel cable is 150 kg. Maximum centre point load between two steel cables is 100 kg. Note; Our flybars are equipped with a fixed light set.  Above the audience are 3 x 12 m Prolyte trusses, each truss mounted on two 500 kg Chain hoists. Maximum weight is 500 kg uniformly distributed. Just in front of the stage is 1 x 16 m Prolyte truss mounted on three 500 kg chain hoist. Maximum weight is 310 kg uniformly distributed. Above each side balcony hangs one 1 x 14 m Prolyte truss mounted on two 250 kg chain hoist. Maximum weight is 250 kg uniformly distributed.
<b>Projection</b>	We have a fixed projector in our Muzenzaal. When you have the need for another kind of projecting we can provide a Epson EB-L1505 UH with multiple lens options; ELPL M15 – ELPL W06 - ELPL LU04 – ELPL X02 When needed please contact our production team
<b>Projection screens</b>	Stump rear or front projection 16:9 630 x 363 cm size 610 x 343 cm image size
<b>Cyclorama (Cyc)</b>	No cyclorama.
<b>Horizon lights</b>	14 x Robert Juliat LEDhorizon Dalis 860

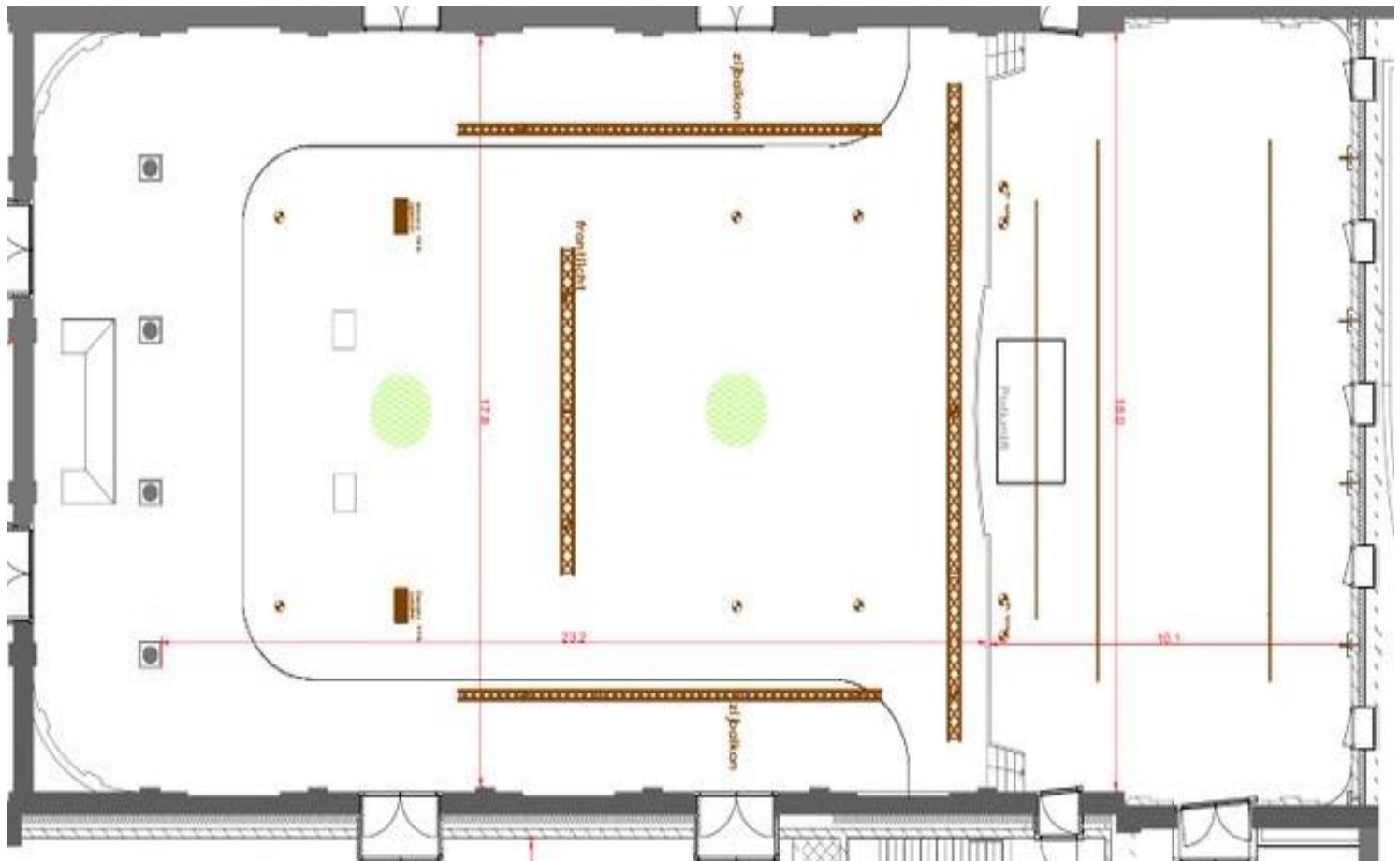
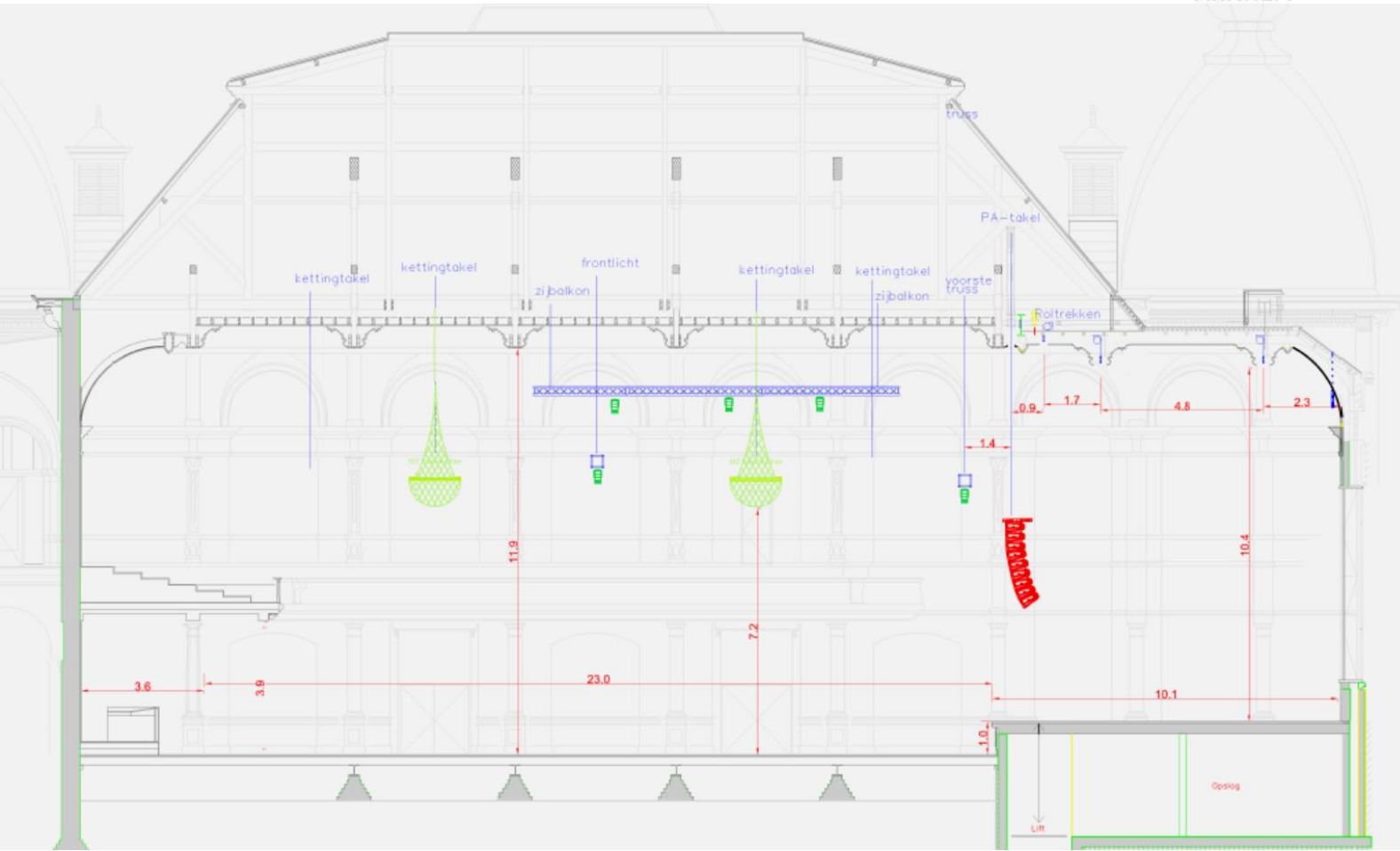
MUZENZAAL	SOUND
<b>Notes</b>	Max sound level:103 dB(A) over 15 minutes. DUTCH COVENANT, RESPECT THIS, THANK YOU We strongly advise a maximum of 95 dB(A), due to the long reverb time of the hall.
<b>House PA</b> PA each side	1x Sound Projects Dreamline 1x Sound Projects Bassline 1x Sound Projects SP215 2x Sound Projects SP18 1x Sound Projects X-act infill
<b>Infill Front balcony</b>	Meyer sound UPJ 1p
<b>Monitors</b>	8x Sound Projects X-Act 4x Sound Projects X-tenders
<b>processor</b>	Yamaha MRX7-D
<b>Processor inputs</b>	1 Left right 2 Left right/ mono sub 3 left right/ mono sub /mono front infills
<b>Drumfill</b>	1x Sound Projects SP-15 1x Sound Projects SP-60
<b>FOH infra</b>	To stage left: 3x ethercon RJ45 cat 5e Note; if needed we can provide an analog multi.
<b>Microphones</b>	6 Shure sm 58 4 Shure sm 57 2 Shure sm 57 beta 2 Shure sm 86 1 Shure sm 87a 1 Sennheiser e 602 1 Audix D6 4 Sennheiser e 604 4 Akg 3000 4 Neuman km 184
<b>Wireless microphones</b>	8x Sennheiser EM 2000 4x beltpack + DPA 4066 ( Lemo) 4x Handheld with e865 capsule 4x Sennheiser Ew 500 4 x Handheld 835 Capsule 4 x beltpack + DPA 4066 (mini jack)
<b>DI's</b>	2x Radial Trim-two passive stereo Di box 3x Radial Pro 48 active DI box 1x Radial Pro D2 passive 2x Palmer Stereo Di passive
<b>FOH desk &amp; gear</b>	1x Soundcraft Impact 32 1x Soundcraft ministagebox 32 in - 16 out When needed please contact use for our firmware version.
<b>Rig your own PA</b>	Sadly we do not have any hoists for rigging your own PA
<b>Grand pianos</b>	1x Yamaha C5 1x Steinway concert D (serial number D 535737)

<b>MUZENZAAL Note</b>	<b>LIGHTING</b> <i>The Muzenzaal is equipped with a fixed lighting plot.</i>
<b>Lights network</b>	Subnet mask: 255.0.0.0 ELC dmxLAN node 8 Muzenzaal-lights: Basement. ELC dmxLAN node 3 Muzenzaal-lights stage Right. ELC dmxLAN node 3 Muzenzaal-lights FOH.
<b>FOH</b>	to stage left 1x ethercom RJ45 cat 6a to stage right 1x ethercom RJ45 cat 6a  ELC dmxLAN node 3. Input 1: sACN 1 Hall fixtures Input 2: Free port Input 3: Free port
<b>Flybars</b>	ELC dmxLAN Node 8 Muzenzaal-lights:  House lights = sACN 1 Flybar 1 = sACN 4 Flybar 2 = sACN 3 Flybar 3 = sACN 2 Robe lparfects around the stage = sACN 5 Front lights flybar = sACN 6 Front lights side flybars = sACN
<b>Stage Left</b>	ELC dmxLAN node 3 Stage left sACN 7 = iparfects on stages sACN 8 = free port in or output sACN 9 = free port in or output
<b>Dimming</b>	We can provide on stage a 24 channel SRS dimming pack. No dimmers on flybars.
<b>Desk</b>	1x Avolite Tiger touch 2 + wing Console IP: 2.0.0.151
<b>Titan version</b>	16
<b>Fixed orchestra fixtures</b>	Above the stage are 28 ETC Selador desire D40 Studio HD, used as fixed orchestra top light.
<b>Front fixtures</b>	10 x JB-Lighting P12 HC
<b>Other fixtures</b>	Manteau lights left and right Each side 2x ADB Fresnel 1 Kw
<b>Fixed light fixtures on stage</b>	6x JB Lighting P9 spot beams 4x Robe Spiider 12x Robe Ledbeam 150 9x Robe lparfects 150 rgbw 20x robe lparfect 150 rgba 28 x ETC desire D40 Studio HD
<b>Floor lights</b>	6x Robe lparfects 150 rgbw
<b>Smoke</b>	Swefog Ultimate 3000
<b>Guest console IP</b>	2.0.0.152



<b>Flybar 3</b>	Mode	Adress	sACN	<b>Extra orchest lights</b>	Mode	Adress	sACN
Robe Spiider	3	1	2	Robe iParfect 150 FW	1	1	5
Robe Spiider	3	34	2	Robe iParfect 150 FW	1	18	5
Robe Spiider	3	67	2	Robe iParfect 150 FW	1	35	5
Robe Spiider	3	100	2	Robe iParfect 150 FW	1	52	5
JB Lighting P9 Beamspot	2	133	2	Robe iParfect 150 FW	1	86	5
JB Lighting P9 Beamspot	2	172	2	Robe iParfect 150 FW	1	103	5
JB Lighting P9 Beamspot	2	211	2	Robe iParfect 150 FW	1	120	5
JB Lighting P9 Beamspot	2	250	2	Robe iParfect 150 FW	1	137	5
Robe Ledbeam	1	289	2	Robe iParfect 150 FW	1	154	5
Robe Ledbeam	1	311	2	Robe iParfect 150 FW	1	171	5
Robe Ledbeam	1	333	2	Robe iParfect 150 FW	1	188	5
Robe Ledbeam	1	355	2	Robe iParfect 150 FW	1	205	5
Robe iParfect 150 RGBA	1	377	2	Robe iParfect 150 FW	1	222	5
Robe iParfect 150 RGBA	1	394	2	Robe iParfect 150 FW	1	239	5
Robe iParfect 150 RGBA	1	411	2	Robe iParfect 150 FW	1	256	5
<b>Flybar 2</b>	Mode	Adress	sACN	Robe iParfect 150 FW	1	273	5
Robe Ledbeam 150	1	1	3	Robe iParfect 150 FW	1	290	5
Robe Ledbeam 150	1	23	3	Robe iParfect 150 FW	1	307	5
Robe Ledbeam 150	1	45	3	Robe iParfect 150 FW	1	324	5
Robe Ledbeam 150	1	67	3	<b>Orchest main top Lights</b>	Mode	Adress	sACN
Robe iParfect 150 RGBA	1	89	3	ETC d40 studio hd	Direct	65	1
Robe iParfect 150 RGBA	1	106	3	ETC d40 studio hd	Direct	74	1
Robe iParfect 150 RGBA	1	123	3	ETC d40 studio hd	Direct	83	1
<b>Flybar 1</b>	Mode	Adress	sACN	ETC d40 studio hd	Direct	92	1
Robe Ledbeam 150	1	1	4	ETC d40 studio hd	Direct	101	1
Robe Ledbeam 150	1	23	4	ETC d40 studio hd	Direct	110	1
Robe Ledbeam 150	1	45	4	ETC d40 studio hd	Direct	119	1
Robe Ledbeam 150	1	67	4	ETC d40 studio hd	Direct	128	1
Robe iParfect 150 RGBA	1	89	4	ETC d40 studio hd	Direct	137	1
Robe iParfect 150 RGBA	1	106	4	ETC d40 studio hd	Direct	146	1
Robe iParfect 150 RGBA	1	123	4	ETC d40 studio hd	Direct	155	1
JB Lighting P9 Beamspot	2	140	4	ETC d40 studio hd	Direct	164	1
JB Lighting P9 Beamspot	2	179	4	ETC d40 studio hd	Direct	173	1
<b>Front fixtures left &amp; Right</b>	Mode	Adress	sACN	ETC d40 studio hd	Direct	182	1
JB Lighting P12 HC	2	1	8	ETC d40 studio hd	Direct	191	1
JB Lighting P12 HC	2	64	8	ETC d40 studio hd	Direct	200	1
JB Lighting P12 HC	2	127	8	ETC d40 studio hd	Direct	209	1
JB Lighting P12 HC	2	190	8	ETC d40 studio hd	Direct	218	1
<b>Front lights</b>	Mode	Adress	sACN	ETC d40 studio hd	Direct	227	1
Jb Lighting P12 HC	2	1	6	ETC d40 studio hd	Direct	236	1
Jb Lighting P12 HC	2	64	6	ETC d40 studio hd	Direct	245	1
Jb Lighting P12 HC	2	127	6	ETC d40 studio hd	Direct	254	1
Jb Lighting P12 HC	2	190	6	ETC d40 studio hd	Direct	263	1
Jb Lighting P12 HC	2	253	6	ETC d40 studio hd	Direct	272	1
Jb Lighting P12 HC	2	316	6	ETC d40 studio hd	Direct	281	1
<b>House lights</b>	Mode	Adress	sACN	ETC d40 studio hd	Direct	290	1
Robe iparfect 150 FW		1	7	ETC d40 studio hd	Direct	299	1
Robe iparfect 150 FW		18	7	ETC d40 studio hd	Direct	308	1
Robe iparfect 150 FW		35	7	<b>House Lights</b>	Mode	Adress	sACN
Robe iparfect 150 FW		52	7	House lights balcony		1	1
Robe iparfect 150 FW		69	7	Chandelier main hall		2	1
Robe iparfect 150 FW		86	7	Chandelier main hall		3	1
Manteau left / right	Mode	Adress	sACN	House lights hall right		4	1
ADB fresnel		7 8 9 10	1	House lights hall Left		5	1





**GOOD TO KNOW**

<b>Local emergency number</b>	In The Netherlands the emergency number is: 112 Apart from Dutch, they also speak English and German
<b>Nearest doctor</b>	The nearest doctor is situated opposite the artist entrance, on the other side of the road. <i>Medar dokterspraktijk.</i> Address is Velperbuitensingel 15a 6828CV Arnhem. Phone number: +31(0)26 - 351 0990
<b>Nearest drugstore</b>	The nearest drugstore is situated opposite the artist entrance, on the other side of the road. <i>Musis Gezondheidscentrum.</i> Address is Velperbuitensingel 15a 6828CV Arnhem.
<b>Nearest hospital</b>	The nearest hospital is <i>Rijnstate Ziekenhuis.</i> Address is Wagnerlaan 55, 6815 AD Arnhem Phone number: +31(0)88 005 8888
<b>Local taxi</b>	Taxi Arnhem Centrale 24/7 Phone number: +31(0)26 - 2 606 606
<b>Coffee</b>	We only serve coffee from Peeze Arnhem. Mostly because we like it the most.
<b>Smile</b>	We always try to start the day with a smile (and coffee), and try to keep it that way throughout the day. Good food, sufficient breaks, and great stories will certainly help to do the trick.
<b>Work</b>	We all work here, because we love the job. We hope you do too, so that together we can make your show an absolute smasher.
<b>Mistakes</b>	Even we make mistakes, and to be honest, we are glad we do. It makes us human, so please be gentle, if it happens. We will always do our best to solve it.

**The venue**

