

## TECHNICAL SPECS - LIGHT

|                                      |   |
|--------------------------------------|---|
| <b>Note</b>                          | <b>The Muzenzaal is equipped with a fixed lighting plot.</b>  |
| <b>Lights network</b>                | Subnet mask: 255.0.0.0<br>ELC dmxLAN node 8 Muzenzaal-lights: Basement.<br>ELC dmxLAN node 3 Muzenzaal-lights stage Right.<br>ELC dmxLAN node 3 Muzenzaal-lights.   |
| <b>FOH</b>                           | To stage left 1x ethercom RJ45 cat 6a<br>To stage right 1x ethercom RJ45 cat 6a<br>ELC dmxLAN node 3.<br>Input 1: sACN 1 Hall fixtures<br>Input 2: Free port<br>Input 3: Free port  |
| <b>Flybars</b>                       | ELC dmxLAN Node 8 Muzenzaal-lights:<br>House lights = sACN 1<br>Flybar 1 = sACN 4<br>Flybar 2 = sACN 3<br>Flybar 3 = sACN 2<br>Robe lparfects around the stage = sACN 5<br>Front lights flybar = sACN 6<br>Front lights side flybars = sACN 8 |
| <b>Stage Left</b>                    | ELC dmxLAN node 3 Stage left<br>sACN 7 = iparfects on stages<br>sACN 8 = free port in or output<br>sACN 9 = free port in or output  |
| <b>Dimming</b>                       | We can provide on stage a 24 channel SRS dimming pack. No dimmers on flybars.   |
| <b>Desk</b>                          | 1x Avolite Tiger touch 2 + wing<br>Console IP: 2.0.0.151  |
| <b>Titan version</b>                 | 16  |
| <b>Fixed orchestra fixtures</b>      | Above the stage are 28 ETC Selador desire D40 Studio HD, used as fixed orchestra top light.   |
| <b>Front fixtures</b>                | 10 x JB-Lighting P12 HC   |
| <b>Other fixtures</b>                | Manteau lights left and right<br>Each side<br>2x ADB Fresnel 1 Kw   |
| <b>Fixed light fixtures on stage</b> | 6x JB Lighting P9 spot beams<br>4x Robe Spider<br>12x Robe Ledbeam 150<br>9x Robe lparfects 150 rgbw<br>20x robe lparfect 150 rgba<br>28 x ETC desire D40 Studio HD   |
| <b>Floor lights</b>                  | 6x Robe lparfects 150 rgbw  |
| <b>Horizon lights</b>                | 14 x Robert Juliat LEDhorizon Dalis 860   |
| <b>Guest console IP</b>              | 2.0.0.152   |
| <b>Smoke</b>                         | Swefog Ultimate 3000  |

| <b>Flybar 3</b>                        | <b>Mode</b> | <b>Adress</b> | <b>sACN</b> |
|--|-------------|---------------|-------------|
| Robe Spiider                           | 3           | 1             | 2           |
| Robe Spiider                           | 3           | 34            | 2           |
| Robe Spiider                           | 3           | 67            | 2           |
| Robe Spiider                           | 3           | 100           | 2           |
| JB Lighting P9 Beamspot                | 2           | 133           | 2           |
| JB Lighting P9 Beamspot                | 2           | 172           | 2           |
| JB Lighting P9 Beamspot                | 2           | 211           | 2           |
| JB Lighting P9 Beamspot                | 2           | 250           | 2           |
| Robe Ledbeam                           | 1           | 289           | 2           |
| Robe Ledbeam                           | 1           | 311           | 2           |
| Robe Ledbeam                           | 1           | 333           | 2           |
| Robe Ledbeam                           | 1           | 355           | 2           |
| Robe iParfect 150 RGBA                 | 1           | 377           | 2           |
| Robe iParfect 150 RGBA                 | 1           | 394           | 2           |
| Robe iParfect 150 RGBA                 | 1           | 411           | 2           |
| <b>Flybar 2</b>                        | <b>Mode</b> | <b>Adress</b> | <b>sACN</b> |
| Robe Ledbeam 150                       | 1           | 1             | 3           |
| Robe Ledbeam 150                       | 1           | 23            | 3           |
| Robe Ledbeam 150                       | 1           | 45            | 3           |
| Robe Ledbeam 150                       | 1           | 67            | 3           |
| Robe iParfect 150 RGBA                 | 1           | 89            | 3           |
| Robe iParfect 150 RGBA                 | 1           | 106           | 3           |
| Robe iParfect 150 RGBA                 | 1           | 123           | 3           |
| <b>Flybar 1</b>                        | <b>Mode</b> | <b>Adress</b> | <b>sACN</b> |
| Robe Ledbeam 150                       | 1           | 1             | 4           |
| Robe Ledbeam 150                       | 1           | 23            | 4           |
| Robe Ledbeam 150                       | 1           | 45            | 4           |
| Robe Ledbeam 150                       | 1           | 67            | 4           |
| Robe iParfect 150 RGBA                 | 1           | 89            | 4           |
| Robe iParfect 150 RGBA                 | 1           | 106           | 4           |
| Robe iParfect 150 RGBA                 | 1           | 123           | 4           |
| JB Lighting P9 Beamspot                | 2           | 140           | 4           |
| JB Lighting P9 Beamspot                | 2           | 179           | 4           |
| <b>Front fixtures left &amp; Right</b> | <b>Mode</b> | <b>Adress</b> | <b>sACN</b> |
| JB Lighting P12 HC                     | 2           | 1             | 8           |
| JB Lighting P12 HC                     | 2           | 64            | 8           |
| JB Lighting P12 HC                     | 2           | 127           | 8           |
| JB Lighting P12 HC                     | 2           | 190           | 8           |
| <b>Front lights</b>                    | <b>Mode</b> | <b>Adress</b> | <b>sACN</b> |
| Jb Lighting P12 HC                     | 2           | 1             | 6           |
| Jb Lighting P12 HC                     | 2           | 64            | 6           |
| Jb Lighting P12 HC                     | 2           | 127           | 6           |
| Jb Lighting P12 HC                     | 2           | 190           | 6           |
| Jb Lighting P12 HC                     | 2           | 253           | 6           |
| Jb Lighting P12 HC                     | 2           | 316           | 6           |

| <b>Extra orchest lights</b>    | <b>Mode</b> | <b>Adress</b> | <b>sACN</b> |
|--------------------------------|-------------|---------------|-------------|
| Robe iParfect 150 FW           | 1           | 1             | 5           |
| Robe iParfect 150 FW           | 1           | 18            | 5           |
| Robe iParfect 150 FW           | 1           | 35            | 5           |
| Robe iParfect 150 FW           | 1           | 52            | 5           |
| Robe iParfect 150 FW           | 1           | 86            | 5           |
| Robe iParfect 150 FW           | 1           | 103           | 5           |
| Robe iParfect 150 FW           | 1           | 120           | 5           |
| Robe iParfect 150 FW           | 1           | 137           | 5           |
| Robe iParfect 150 FW           | 1           | 154           | 5           |
| Robe iParfect 150 FW           | 1           | 171           | 5           |
| Robe iParfect 150 FW           | 1           | 188           | 5           |
| Robe iParfect 150 FW           | 1           | 205           | 5           |
| Robe iParfect 150 FW           | 1           | 222           | 5           |
| Robe iParfect 150 FW           | 1           | 239           | 5           |
| Robe iParfect 150 FW           | 1           | 256           | 5           |
| Robe iParfect 150 FW           | 1           | 273           | 5           |
| Robe iParfect 150 FW           | 1           | 290           | 5           |
| Robe iParfect 150 FW           | 1           | 307           | 5           |
| Robe iParfect 150 FW           | 1           | 324           | 5           |
| <b>Orchest main top Lights</b> | <b>Mode</b> | <b>Adress</b> | <b>sACN</b> |
| ETC d40 studio hd              | Direct      | 65            | 1           |
| ETC d40 studio hd              | Direct      | 74            | 1           |
| ETC d40 studio hd              | Direct      | 83            | 1           |
| ETC d40 studio hd              | Direct      | 92            | 1           |
| ETC d40 studio hd              | Direct      | 101           | 1           |
| ETC d40 studio hd              | Direct      | 110           | 1           |
| ETC d40 studio hd              | Direct      | 119           | 1           |
| ETC d40 studio hd              | Direct      | 128           | 1           |
| ETC d40 studio hd              | Direct      | 137           | 1           |
| ETC d40 studio hd              | Direct      | 146           | 1           |
| ETC d40 studio hd              | Direct      | 155           | 1           |
| ETC d40 studio hd              | Direct      | 164           | 1           |
| ETC d40 studio hd              | Direct      | 173           | 1           |
| ETC d40 studio hd              | Direct      | 182           | 1           |
| ETC d40 studio hd              | Direct      | 191           | 1           |
| ETC d40 studio hd              | Direct      | 200           | 1           |
| ETC d40 studio hd              | Direct      | 209           | 1           |
| ETC d40 studio hd              | Direct      | 218           | 1           |
| ETC d40 studio hd              | Direct      | 227           | 1           |
| ETC d40 studio hd              | Direct      | 236           | 1           |
| ETC d40 studio hd              | Direct      | 245           | 1           |
| ETC d40 studio hd              | Direct      | 254           | 1           |
| ETC d40 studio hd              | Direct      | 263           | 1           |
| ETC d40 studio hd              | Direct      | 272           | 1           |
| ETC d40 studio hd              | Direct      | 281           | 1           |

| House lights         | Mode | Adress   | sACN |
|----------------------|------|----------|------|
| Robe iparfect 150 FW |      | 1        | 7    |
| Robe iparfect 150 FW |      | 18       | 7    |
| Robe iparfect 150 FW |      | 35       | 7    |
| Robe iparfect 150 FW |      | 52       | 7    |
| Robe iparfect 150 FW |      | 69       | 7    |
| Robe iparfect 150 FW |      | 86       | 7    |
| Manteau left / right | Mode | Adress   | sACN |
| ADB fresnel          |      | 7 8 9 10 | 1    |

| ETC d40 studio hd       | Direct | 290    | 1    |
|-------------------------|--------|--------|------|
| ETC d40 studio hd       | Direct | 299    | 1    |
| ETC d40 studio hd       | Direct | 308    | 1    |
| House Lights            | Mode   | Adress | sACN |
| House lights balcony    |        | 1      | 1    |
| Chandelier main hall    |        | 2      | 1    |
| Chandelier main hall    |        | 3      | 1    |
| House lights hall right |        | 4      | 1    |
| House lights hall Left  |        | 5      | 1    |

Project: Musis Muzenzaal  
 Project location: Musis Arnhem  
 Plot Name: Plot Full A3  
 Drawing version: v1.3 / 2024-07-03  
 Drawing author: Rik Berkelder

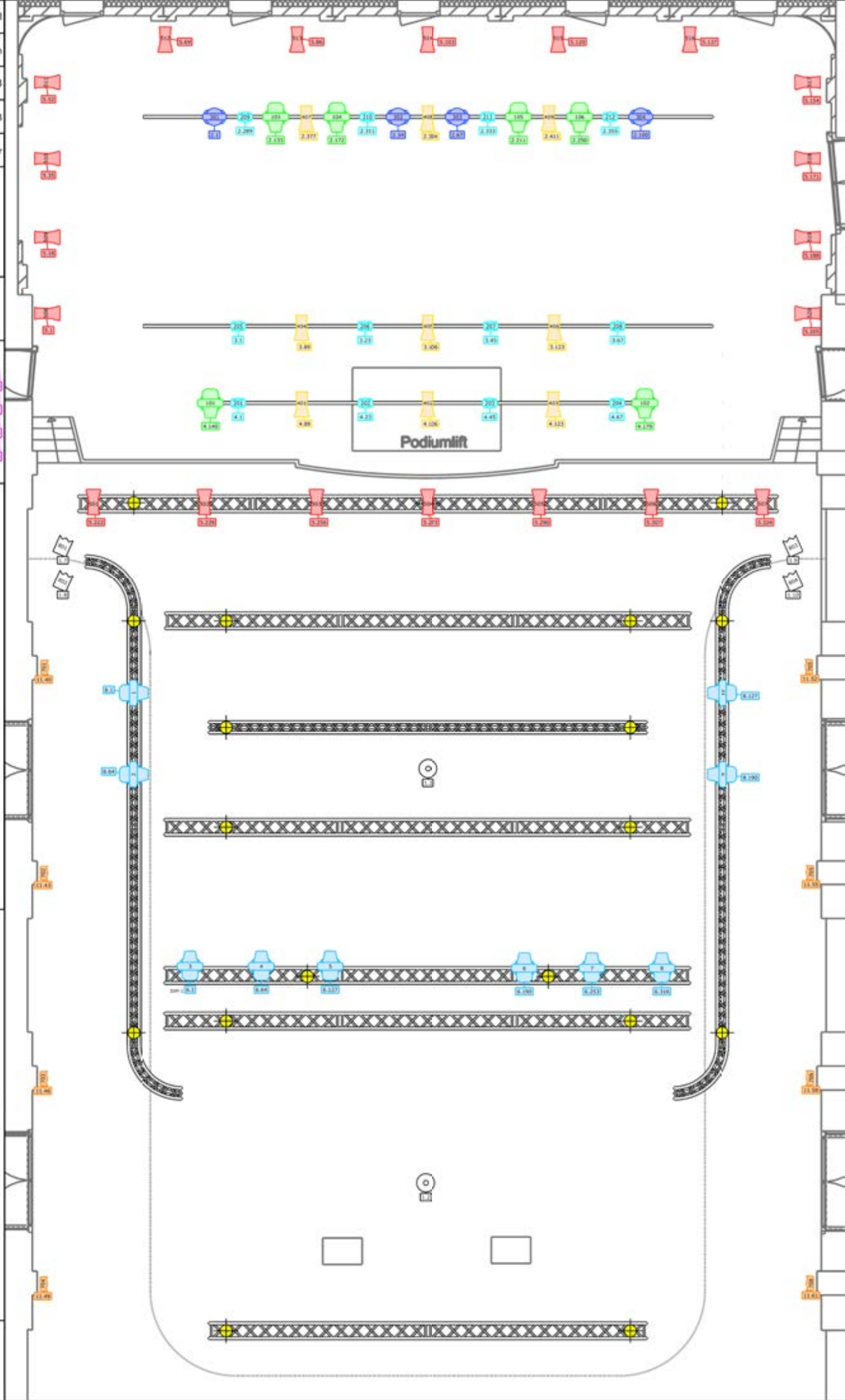
House Lights  
 Ceiling  
 1.1  
 Chandeliers  
 1.2 1.3  
 Hall Right  
 1.4  
 Hall Left  
 1.5

sACN Connection  
 Address 2.0.0.30  
 Subnet Mask 255.255.0.0

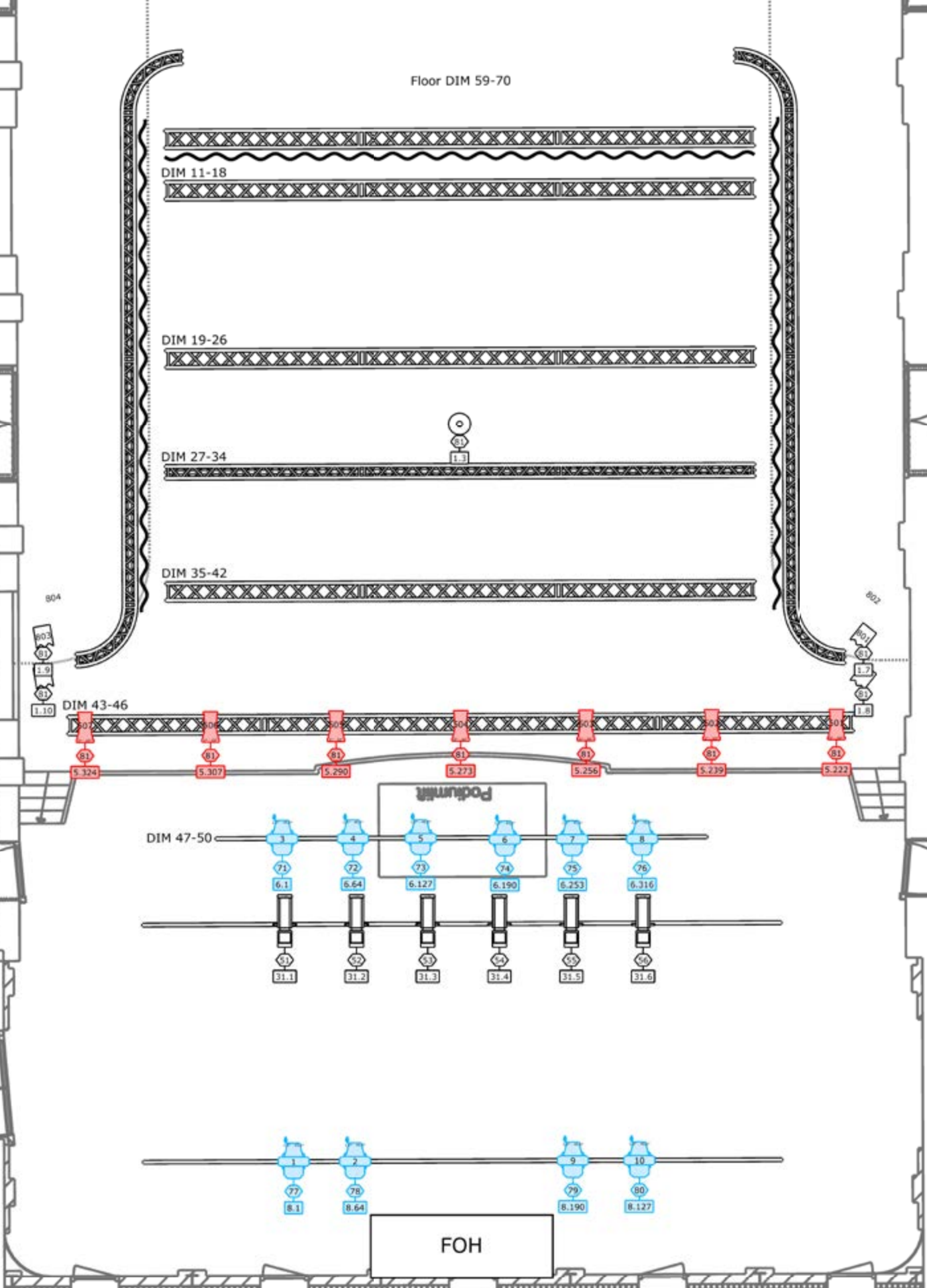
Orchestra Lights

|       |       |       |       |       |       |       |
|-------|-------|-------|-------|-------|-------|-------|
| 601   | 602   | 603   | 604   | 605   | 606   | 607   |
| 1.05  | 1.24  | 1.87  | 1.87  | 1.101 | 1.110 | 1.119 |
| 608   | 609   | 610   | 611   | 612   | 613   | 614   |
| 1.128 | 1.137 | 1.146 | 1.155 | 1.164 | 1.172 | 1.181 |
| 615   | 616   | 617   | 618   | 619   | 620   | 621   |
| 1.191 | 1.200 | 1.209 | 1.218 | 1.227 | 1.236 | 1.245 |
| 622   | 623   | 624   | 625   | 626   | 627   | 628   |
| 1.254 | 1.263 | 1.272 | 1.281 | 1.290 | 1.299 | 1.308 |

- Symbol key
- Selador Desire D40 Studio HD (28)
  - Robin iParFect 150 FW RGBW (20)
  - Robin LEDBeam 150 RGBW (12)
  - P12 Profile HP (10)
  - Robin iParFect 150 FW RGBA (9)
  - P9 BeamSpot HP (6)
  - Fresnel 1kw (4)
  - Robin Spilder (4)
  - Dimmer (2)
  - Chandelier (2)



Floor DIM 59-70



|   |   |
|---|---|
| Project<br><b>Musis Muzenzaal - Kleine zaalopstelling</b> |   |
| Project location<br><b>Musis Arnhem</b>                   | Plot<br><b>With sACN A4</b>                 |
| Drawing author<br><b>Rik Berkelder</b>                    | Drawing version<br><b>v1.1 / 2024-05-23</b> |

|                     |
|---------------------|
| <b>House Lights</b> |
| Balcony             |
| 1.1                 |
| Chandeliers         |
| 1.2 1.3             |
| Hall Right          |
| 1.4                 |
| Hall Left           |
| 1.5                 |
| Audience            |

|                                |
|--------------------------------|
| <b>Symbol key</b>              |
| P12 Profile HP (10)            |
| Robin iParFect 150 FW RGBW (7) |
| Enispot HPS 217 (6)            |

|  |
|--|
| <b>Notes</b>   |
| P12s are controlled as 1channel dimmer through house console |
| sACN Connection  |
| Address 2.0.0.30   |
| Subnet Mask 255.255.0.0                                      |